



Laser Diode ZBD-LD-530-1650M

ZBD-LD-530-1650M is a multimode laser diode with 1.65W CW output power at 530nm. It is supplied in a 9mm floating mounted TO can with Zener Diode. The laser diode is suitable for opto-electronic applications.

■ Absolute Maximum Ratings

Parameter	Symbol	Value	Unit
Forward Current (Tc=25°C)	I _f	2.3	A
Reverse Current (Tc=25°C)	I _r (LD)	85	mA
Storage Temperature	T _{stg}	-40~85	°C
Operating Case Temperature	T _c	0~65	°C

■ Initial Electrical/Optical Characteristics (Tc=25°C)

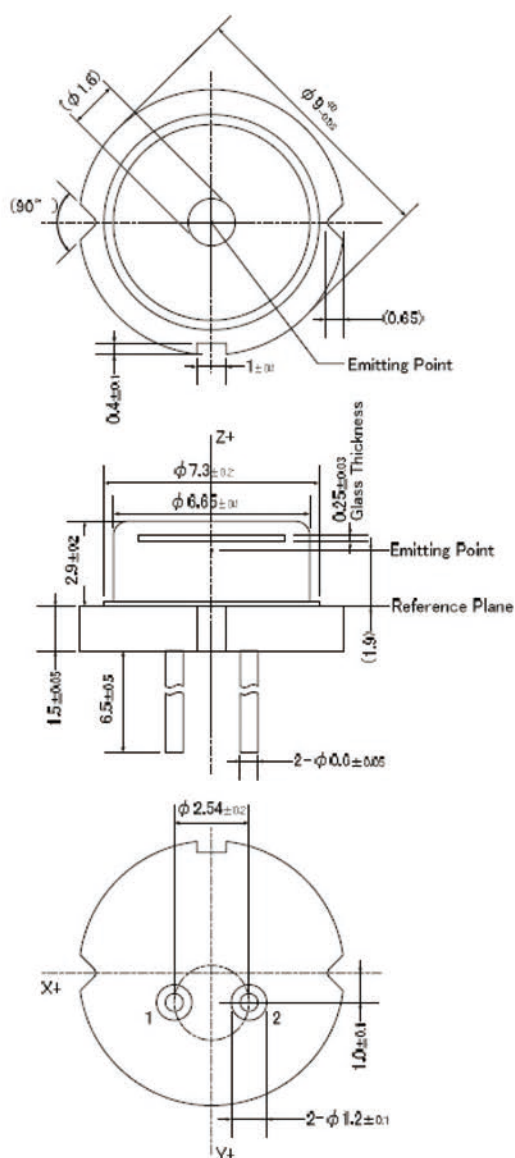
Parameter	Symbol	Condition	Min	Typ.	Max	Unit	
Optical Output Power	P _o	I _f = 1.9A	-	1.65	-	W	
Dominant Wavelength	λ _d	I _f = 1.9A	528	(530)	532	nm	
Threshold Current	I _{th}	CW	150	-	500	mA	
Slope Efficiency	η	CW	-	1.1	-	W/A	
Operating Voltage	V _{op}	I _f = 1.9A	4.0	4.7	5.5	V	
Beam Divergence*	Parallel	θ _{//}	I _f = 1.9A	5	10	15	°
	Perpendicular	θ _⊥	I _f = 1.9A	30	42	50	°

() are reference figures.

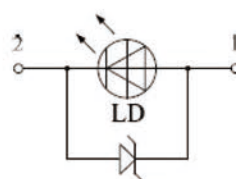
* Full angle at 1/e² from peak intensity



Outline Dimension



Connection



Zener Diode

1. LD Anode
2. LD Cathode

Figures in () are reference purpose only.

Parts	Materials
Stem	Cu + Fe + Ni plating + Au plating
Lead	Ni-Fe-Co alloys + Ni plating + Au plating
Cap	Ni-Fe alloys + Ni plating
Glass	Borosilicate glass
Chip	Gallium nitride
Sub mount	Silicon carbide
Zener Diode	Silicon